

PROGNOZ is pleased to present one of our latest developments - **China Economy Monitor**. Our solution serves to bring various key macroeconomic data series into one place to let analysts explore Chinese market opportunities. We believe that for by incorporating the data mentioned in this proposal and additional proprietary data that you are currently subscribing to or can subscribe to in the future, your organization can really get unique insights into market intelligence.

China Economic Database

Our database provides users access to key macroeconomic indicators. Comprehensive datasets are available at the monthly, quarterly and annual frequency. Statistics are compiled and disseminated at the national, provincial, municipal, and industry level. Data Topics include but are not limited to the following:

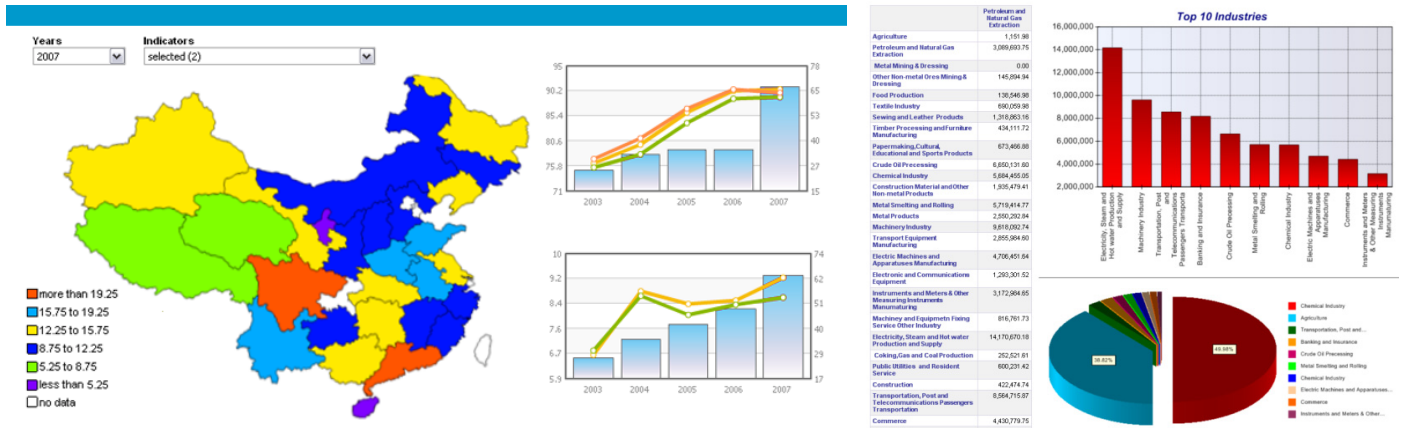
- **National Accounts** (Gross Regional Product, Gross National Income, etc)
- **Population** (Population by genders, birth/death rate, etc)
- **Employment and Wages** (Number of Employed Persons by industries, Earning of Employed Persons by industries, etc)
- **Investment** (Investment in Fixed Assets by types of capital, by industries, by sizes of enterprises, etc)
- **Energy** (Energy Production, Energy Consumption by types of energy, etc)
- **Finance and Budget** (Government Revenue by types of revenue, Government Expenditure by types of expenditure)
- **Price** (CPI, PPI by industries, etc)
- **People's Livelihood** (Urban/Rural Household's Engle Coefficient, Urban/Rural Household Income, Urban/Rural Household Expenditure, etc)
- **General Survey of Cities** (Population, Employment, Gross Regional Product, etc)
- **Environment Protection** (Water Supply and Use, Emission and Treatment of Industrial Waste, Land, Forest Area, etc)
- **Agriculture** (Agricultural Production, Agricultural Investment, Plant Area, etc)
- **Industry** (Number of Industrial Enterprises by types of enterprises, Financial Indicators of Industrial Enterprises, etc)
- **Construction** (Number of Enterprises in Construction Sector by types of enterprises, Financial Indicators of Industrial Enterprises in Construction Sector, etc)
- **Transport, Post and Telecommunication Services** (Length of Transport Routes, Passenger Traffic, Freight Traffic, etc)
- **Domestic Trade** (Number of Enterprises/Financial Indicators Enterprises in the sector of Wholesale, Retail, Hotels and Catering by types of service, etc)
- **Foreign Trade and Economic Cooperation** (Imports/Exports, Number of Enterprises with Foreign Funds, etc)
- **Tourism** (Tourists Received, Tourism Revenues, etc)
- **Education, Science and Technology** (Number of Schools/Students, Educational Funds, Patents Granted, etc)
- **Culture, Sports and Public Health** (Number of Institutions in Culture and Cultural Relics, Publication of Video Products, etc)

Data Explorer

Our solution comes with a powerful analytical interface offering advanced graphics, mapping capabilities to allow users monitor, analyze and report data easily.

To give users access to available data, PROGNOZ will implement a data explorer module that will make use of the PROGNOZ OLAP technology, an efficient analytical tool for performing multi-dimensional queries on various data sets, with resulting display exportable to external formats.

Via OLAP, user can easily, on the fly, manipulate data and conduct customized analyses by dragging and dropping dimensions from one component to another within the Control Bar, creating a table view that best meets their needs. From the drop-down boxes, users will be able to select any set of countries, any period of time frame, any indicator of their choice, to be displayed in the table. Our software solution supports all key features of multidimensional data technology: "slice and dice," "drill down," "roll up." User would be able to pivot tables, filter data, and highlight cells according to specific conditions, as well as introducing statistical functions over the data rows and columns. Users can view their data in table/ chart format. The results of user queries can be printed, saved and/ or exported to appropriate Microsoft Office products, Adobe products and/ or other common file types. In addition, an Express Modeling component of the application allows users to run correlation, regressions, ARIMA, and a few other statistical functions.



About PROGNOZ

PROGNOZ is committed to developing innovative and forward-thinking Business Intelligence and Business Performance Management solutions for professionals in the public and private sector. Thousands of users worldwide employ our advanced data integration, analysis, reporting, modeling, web access, and security functionalities when making their most crucial decisions. Contact us today to see how we can help put agriculture intelligence into your future.

For more information, please contact us at 1-205-955-5520 or send us an e-mail at info@prognoz.com